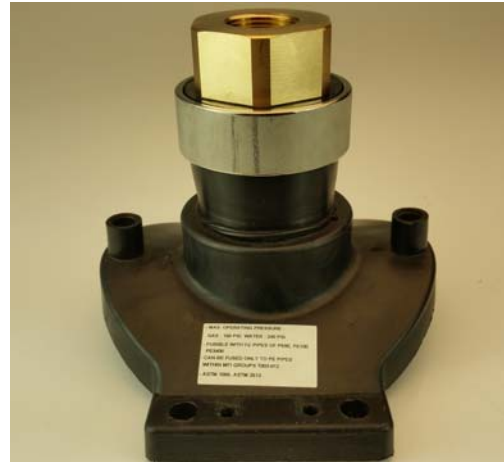
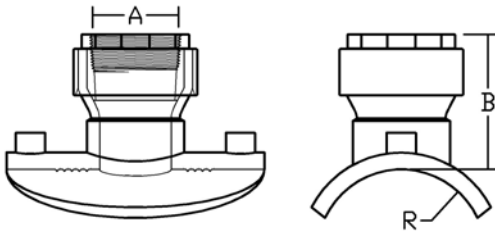


**Electro Fusion Tapping  
Saddle with CC thread**



Nominal Main Size Inches	POLY-CAM Thread Material	Female CC Thread outlet	Outlet To main Length	IPS Radius	DIPS Radius
		<b>A</b>	<b>B</b>	<b>R</b>	<b>R2</b>
2	C954 Bronze, Stainless 316, Stainless 304	.75-1"	4.75	2.375	NA
3	C954 Bronze Stainless 316, Stainless 304	.75-1"	4.75	3.500	NA
4	C954 Bronze Stainless 316, Stainless 304	.75-1"	4.75	4.500	4.800
6	C954 Bronze Stainless 316, Stainless 304	.75-1"	4.75	6.625	6.900
8	C954 Bronze Stainless 316, Stainless 304	.75-1"	4.75	8.625	9.050
10	C954 Bronze Stainless 316, Stainless 304	.75-1"	4.75	10.750	11.100
12	C954 Bronze Stainless 316, Stainless 304	.75-1"	4.75	12.750	13.200
14	C954 Bronze Stainless 316, Stainless 304	.75-1"	4.75	14.000	15.300
16	C954 Bronze Stainless 316, Stainless 304	.75-1"	4.75	16.00	17.400
18	C954 Bronze Stainless 316, Stainless 304	.75-1"	4.75	18.00	NA